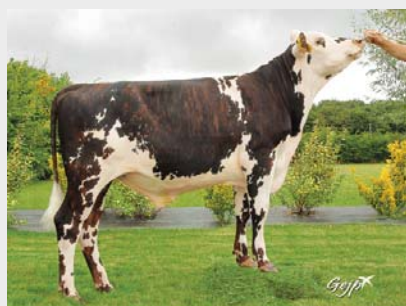
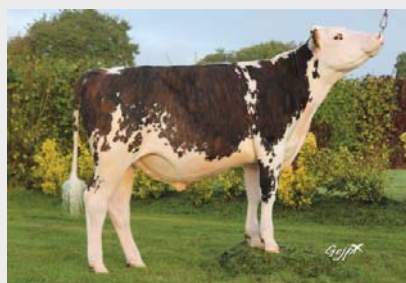


QUICK ANALYSIS

LOSANGELES^{LIB}LUNIVERS^{LIB}

APRIL 2017 PROOFS

The basis changes

The progression of the Normande genetic level is historical:

This April indexation integrates the change of annual basis and this is historical: **increase of nearly 5 points of ISU, No 1 within dual purpose breed** and No 1 in INEL and Milk within all breeds, and it worth underline a big progression in the 2 index mentioned. Another important increase for the breed: Udder health and Feet & Legs.

Beyond the change of the basis, the index model continues to improve because this time, the number of genotyped females added in the basis of reference is higher than the number of new bulls. As a matter of fact, there is a readjustment of all the genomic index of over 3 points for ISU and 35 kg for milk but the hierarchy is the same.

ISU	INEL	TP	TB	LAIT	MO	MA	AP	FT	MU	STMA	REPRO	LGF
-4.5	-3.5	-0.04	-0.08	-72	-0.05	-0.04	-0.08	-0.02	+0.06	-0.08	+0.04	-0.07



The genetic of EVOLUTION at the forefront

The Genetic of EVOLUTION consolidates the genetic progress of the breed by placing 71 bulls within the Top 100, 38 bulls within the Top 50 of proven bulls and 9 bulls within the Top 10 of proven bulls with CD 95%

The plus for the new EVOLUTION bulls: renewal in Quality and Quantity:

- Quality: ISU +5, MILK +64 kg, TB +0,3, FO +0.3, and more choice.

Publi. Av 17	Nbre	ISU	TP	TB	LAIT	MO	FT	ACETO	STMA
EVOLUTION	20	158	0,5	0,4	697	+1.3	+0.6	+0.5	+0.8
Autres Unités	15	153	0,5	0,1	633	+1.3	+0.3	ND	+0.7

- Quantity: If we cumulate the last 2 proofs releases, 66% of the new bulls are from EVOLUTION program (35 vs 53)



The Leaders of the breed

• LOSANGELES^{LIB}, N°1 ISU, + de 1500 sexed semen marketed

More than 1500 sexed semen have already been marketed since beginning of the year. This bull is multi-purpose and is the standard bearer of EVOLUTION sexed semen offer with a good combination of Top genetic level and Top price (21/29 €).

• LUNIVERS^{LIB}, N°1 Type (+2.9)

LUNIVERS^{LIB} is the leader from the famous Type origin of JOYAU^{LIB}, LIBERTAD^{LIB}. You can find him in the April 2017 selection within the new sexed semen range



GAME OVER^{LIB}



Fille FUSEOS ISY^{LIB}:
Idéologie – Gaec Lecoffre – 50



LATACAN^{LIB}:



LUTECE^{LIB}:



IATINE^{LIB}:

• **GAME OVER^{LIB}, N°1 within the proven bulls**

With 708 daughters in production from then and 262 Type daughters in herds, GAMEOVER^{LIB} is also leader regarding the Génosanté index (Acetonaemia + 2,2) and Beef calves index (+ 2). He is available in conventional semen Ferti+ and will keep being in the range Ferti Sexed+ until June 2017.

• **FUSEOS ISY^{LIB}: N°1 Type proven bull**

FUSEOS ISY^{LIB} shows the more interesting increase (ISU 160, +13) and becomes the TYPE REFERENCE (+2,5) with very impressive and consistent daughters in herds and shows. Moreover, his Milk index keeps improving (> 800 kg)



To produce heifers: Sexed Semen range increased

Besides LOSANGELES^{LIB} and GAME OVER^{LIB}, the offer is getting larger, enabling the production in herd of Normande heifers and a bigger renewal. This also value the actual demands of several dairies, grazing herds or herds converting into Bio, and French and International new-comers. And you can choose between New bulls, Price, or both.

• **New bulls** (Available in April 2017 except for LISLANDER^{LIB})

- LATACAN^{LIB}** The Type Bull (+1.8), Milk (+867)
- LUTECE^{LIB}** The Health new bull (+1.2), Type (+1.6) + Production traits
- LISLANDER^{LIB}** Milking original bull (+1037), Frame (+0.9), easy to mate with
- JANKEE^{LIB}** The Type specialist (+2.0) + Feet & Legs (+2.3)
- LUNIVERS^{LIB}** The N°1 for Type (+2.9)

• **Bulls rather easy to get 21/29€ (Members' price)**

- IATINE^{LIB}** Complete bull and excellent Ferti Sexed+ Calving 92 + Viv 95 21€
- INEXCES^{LIB}** The prototype +value QUALI : Production traits, FO+1.7, MU +0.8 29€
- INSOUMIS^{LIB}** The bull good for Milk and easy (+935 kg), keeps in progress 21€
- HONESS ISY^{LIB}** Top Repro (+1.4) and excellent Ferti Sexed+ 21€
- JOUXTANT^{LIB}** Top milk solids (Inel 48) and easy to use 29€



New bulls for next dairy season and XY Création

Some news bulls will enlarge the offers QUALI^{LIB}, CONFORT^{LIB} and OPTI^{LIB} in the coming weeks

>BULLS	ISU	TP	MILK	MO	HEALTH	MARKETING
LOCO	170	1.2	559	2.3	0.5	July 17
LUPUS	167	-0.3	1107	1.5	-0.1	July 17
LAUDANUM	166	0.7	501	1.9	1.0	Sept. 17
LUTECE	165	0.9	426	1.6	1.2	April 17- SS only
MORBIHAN	164	0.2	1081	0.7	0.7	July 17
LAUREAS	159	0.0	869	0.6	0.6	July 17
LISLANDER	159	-0.2	1037	0.7	0.3	July 17 – sexed semen
LETINCEL	158	0.4	641	1.6	0.8	July 17
LORGAN	154	1.3	570	0.8	0.6	July 17
LEVELLAND	151	0.2	821	0.7	0.3	July 17

First, the semen of the youngest bulls MYKONOS^{LIB}, MIRAGE^{LIB}, LINDO^{LIB}, MERCURE^{LIB}, MAGNIFICO^{LIB}, MANGO^{LIB}, MILAN^{LIB}, MAJEUR^{LIB}, LYNCH^{LIB} will be put in the XY creation Sires list for mating in the context of the program and the core. Possible marketing in the fall 2017 and beginning of 2018.